

# AIRCAST®

## Vascular Catalogue



## Contents

Contents	Page
Introduction	2
VenaFlow® Elite	3
VenaFlow Elite with S Mode	5
VenaPro	6
VenaPure®	7
Veinax™	9
Notes	11



## Introduction

DJO Global –  
Expertise of great brands in orthopaedics,  
expands into vascular health.

DJO Global is a world leader in the design, manufacture and distribution of quality medical devices marketed under brands, such as Aircast and DonJoy.

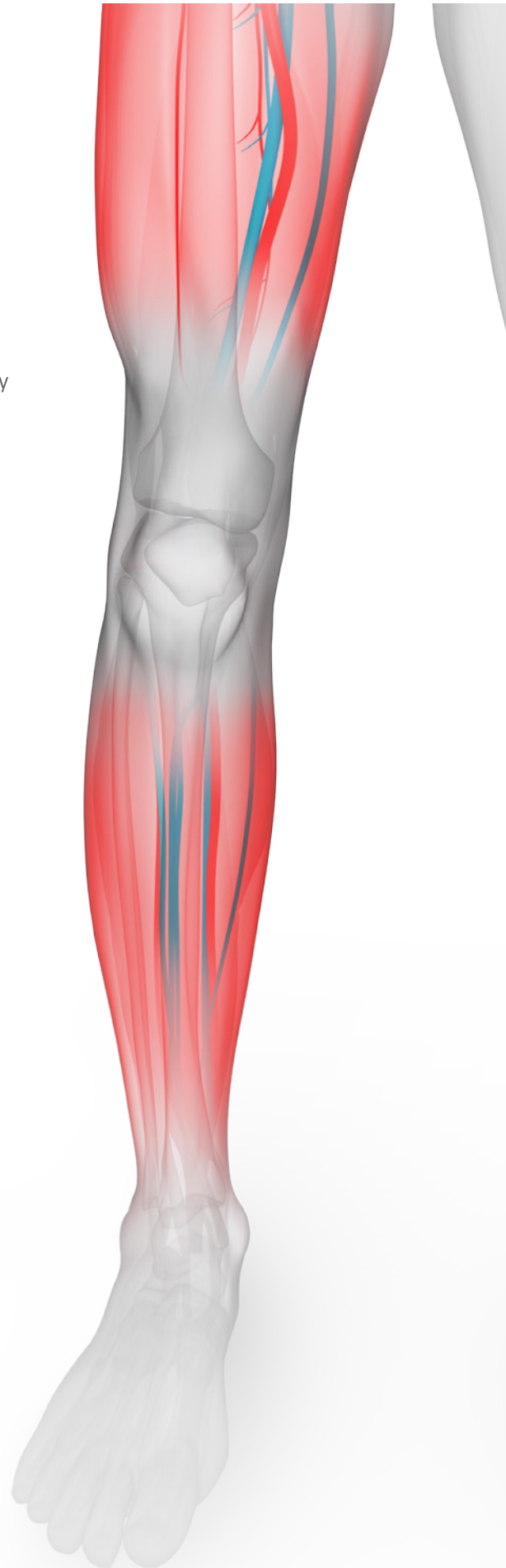
DJO Global provides a wide range of solutions designed to improve muscular health, osteoarthritis, vascular health as well as offering solutions for pain treatment.

Today, DJO Global is fully committed to providing products in the area of Vascular health, which can prevent the potentially fatal effects of venous thromboembolism (VTE) as well as manage the severe symptoms of venous diseases.

VTE is still a major challenge for healthcare professionals and has become known as the “Silent Killer” due to lack of symptoms that are clinically visible. DJO can help to limit the silent nature of this disease with the availability of products like VenaFlow Elite, VenaPro and VenaPure.

Venous diseases affect many different people at many different stages of life and can be debilitating and often require long-term care. This disease manifests itself in many different ways, however it can be prevented and controlled.

Whilst surgical interventions are becoming more commonplace, there is still a clinical need for more conservative therapies and our product range, Veinax responds well to this need.





## VenaFlow® Elite

VenaFlow is the only VTE prophylaxis compression device that is proven to mimic ambulation, thus reducing VTE rates by 50% vs. other devices. This is the best technology to protect patients and healthcare practices from the rising risk of the VTE crisis.

### Indications

- Prophylaxis for deep vein thrombosis
- VenaFlow Elite System combines normal inflation and graduated sequential compression to accelerate venous velocity and enhance fibrinolysis
- For the superior emptying of veins, VenaFlow Elite also incorporates asymmetric compression

### Features and Benefits

- Low profile, light-weight design
- Compliance monitor/alarm
- Telescoping bed hanger for custom adjustability
- Automatic Cuff Detection - system identifies and adjusts pressure based on cuffs attached
- Single Leg Operation Button - one push of a button selects single leg operation
- Preset pressures and alarms - no adjustments necessary
- One pump for calf, thigh and foot cuffs provides for ease of use and minimises inventory
- Breathable and comfortable calf, foot and thigh cuffs available





## Ordering Information

VenaFlow Elite			
Part Number	Description	Qty	Max. Calf Circumference
30B	VenaFlow Elite System (US Power Supply)	1	-
30BI	VenaFlow Elite System (International Power Supply)	1	-
30B-B	VenaFlow Elite System with Battery (US)	1	-
30BI-B	VenaFlow Elite System with Battery (International)	1	-
3008	Tube Assembly, 168 cm (5.5')	Each	-
3008XL	Tube Assembly, 260 cm (8.5')	Each	-
3008XXL	Tube Assembly, 320 cm (10.5')	Each	-
3008XXXL	Tube Assembly, 380 cm (12.5')	Each	-
3040	VenaFlow Elite Calf Cuff	Pair	48 cm (19")
3041	VenaFlow Elite Sterile Calf Cuff	Each	48 cm (19")
3042	VenaFlow Elite XL Calf Cuff	Pair	56 cm (22")
3043	VenaFlow Elite Bariatric Calf Cuff	Pair	76 cm (30")
3044	VenaFlow Elite Sterile XL Calf Cuff	Each	56 cm (22")
3045	VenaFlow Elite Thigh Cuff	Pair	74 cm (29")
3046	VenaFlow Elite Foot Cuff	Pair	Universal
3050	VenaFlow Elite Foam Calf Cuff	Pair	48 cm (19")
System Replacement Parts			
Part Number	Description	Qty	
3071	Bed Hanger	1	
3072	Tube Attachment Tag	1	
3073	Fuse	Pair	
3074	Battery Pack	Pair	
Please Contact Customer Services for Replacement Power Leads			

## VenaFlow Elite with S Mode

The VenaFlow Elite with S mode is a novel system combining both rapid and slow inflation to ensure that prophylaxis is maintained under all conditions. This ensures that compliance is maintained for both clinicians and patients. For the majority of therapeutic conditions, VenaFlow's clinically proven technology of rapid inflation still offers the most effective prevention of VTE. At times, however when therapy may need to be adapted, then it is possible to alter the compression to a slower inflation mode.

### Indications

Prophylaxis for deep vein thrombosis

### Features and Benefits

- Low profile, light-weight design
- Compliance monitor/alarm
- Telescoping bed hanger for custom adjustability
- Automatic cuff detection - system identifies and adjusts pressure based on cuffs attached
- Automatic single/dual leg detection
- Preset pressures and alarms - no adjustments necessary
- One pump for calf, thigh and foot cuffs provides for ease of use and minimises inventory
- Breathable and comfortable Calf, Foot and Thigh cuffs available
- Choice of compression mode responds to therapeutic needs



### Ordering Information

VenaFlow® S Mode			
Part Number	Description	Qty	Max Calf Circumf.
30BI-S	VenaFlow Elite System w/S mode (International Power Supply)	1	-
30BI-SB	VenaFlow Elite Sytem with battery & S mode (international Power Supply)	1	-
3008	Tube Assembly, 168 cm (5.5')	Each	-
3008XL	Tube Assembly, 260 cm (8.5')	Each	-
3008XXL	Tube Assembly, 320 cm (10.5')	Each	-
3008XXXL	Tube Assembly, 380 cm (12.5')	Each	-
3040	VenaFlow Elite Calf Cuff	Pair	48 cm (19")
3042	VenaFlow Elite XL Calf Cuff	Pair	56 cm (22")
3043	VenaFlow Elite Bariatric Calf Cuff	Pair	76 cm (30")
3050	VenaFlow Elite Foam Calf Cuff	Pair	48 cm (19")
3045	VenaFlow Elite Thigh Cuff	Pair	74 cm (29")
3046	VenaFlow Elite Foot Cuff	Pair	Universal
3044	VenaFlow Elite Sterile XL Calf Cuff	Each	56 cm (22")
3045	VenaFlow Elite Thigh Cuff	Pair	74 cm (29")
3046	VenaFlow Elite Foot Cuff	Pair	Universal
3050	VenaFlow Elite Foam Calf Cuff	Pair	48 cm (19")



VenaPro is the first truly portable pump available offering prophylaxis for deep vein thrombosis. VenaPro gives you and your patients complete freedom to carry on VTE prevention whilst in the safety of the home environment, ensuring comfort and compliance.

The pump has been designed using the extensive clinical expertise on intermittent pneumatic compression as the most effective way to prevent venous stasis and therefore minimise the risk of a DVT.

#### Indications

Aid in the prevention of DVT.

Can also be used as an aid in the prophylaxis for DVT by persons expecting to be stationary for long periods of time.

Enhance blood circulation.

Diminish post-operative pain and swelling.

Reduce wound healing time.

Aid in the treatment and healing of: stasis dermatitis, venous stasis ulcers, arterial and diabetic leg ulcers, chronic venous insufficiency and reduction of oedema in the lower limbs.

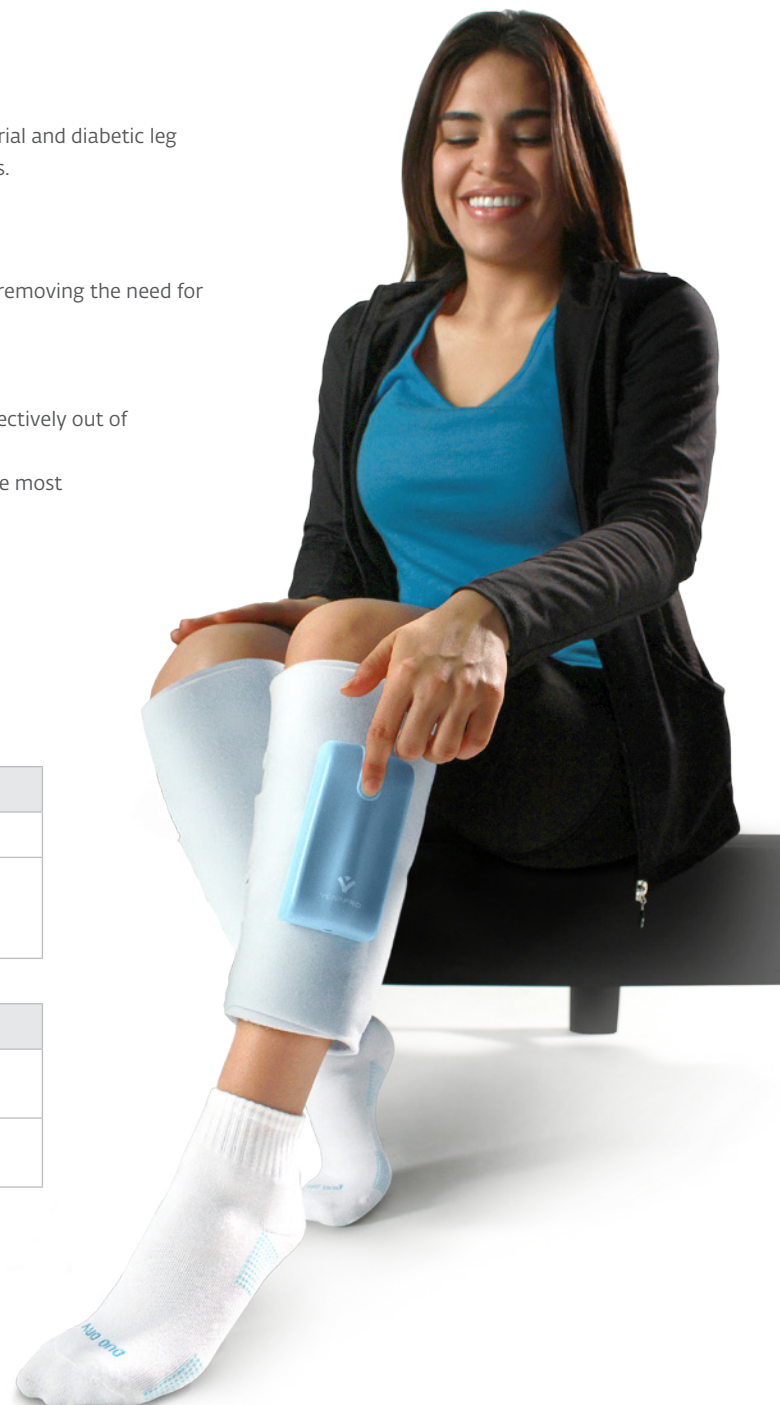
#### Features and Benefits

- The all-in-one integral device combines the pump and calf cuff in one device removing the need for extra tubing making it truly portable
- Easy to use, one button operation to ensure patient compliance
- Re-chargeable batteries for extended life
- The sequential and normal inflation cycle ensures that the blood is moved effectively out of the deep veins minimising the risk of clots forming
- The pump can be rotated on the leg to deliver asymmetric compression in the most comfortable position for the patient
- Lightweight design and soft cuffs for increased comfort
- Compliance monitoring to ensure therapy is being maintained with the use of a USB port
- Full alarm system to reassure patients of correct usage

#### Ordering Information

VenaPro®		
Part Number	Description	Size
30MI	One pair of calf sleeves with pre-attached intermittent pneumatic pump	< 56 cm

Accessories		
3111-020	One pair of calf extenders attach to existing calf sleeve	< 68.6 cm
3111-024	Compliance Data Communicator with USB port	NA





## VenaPure®

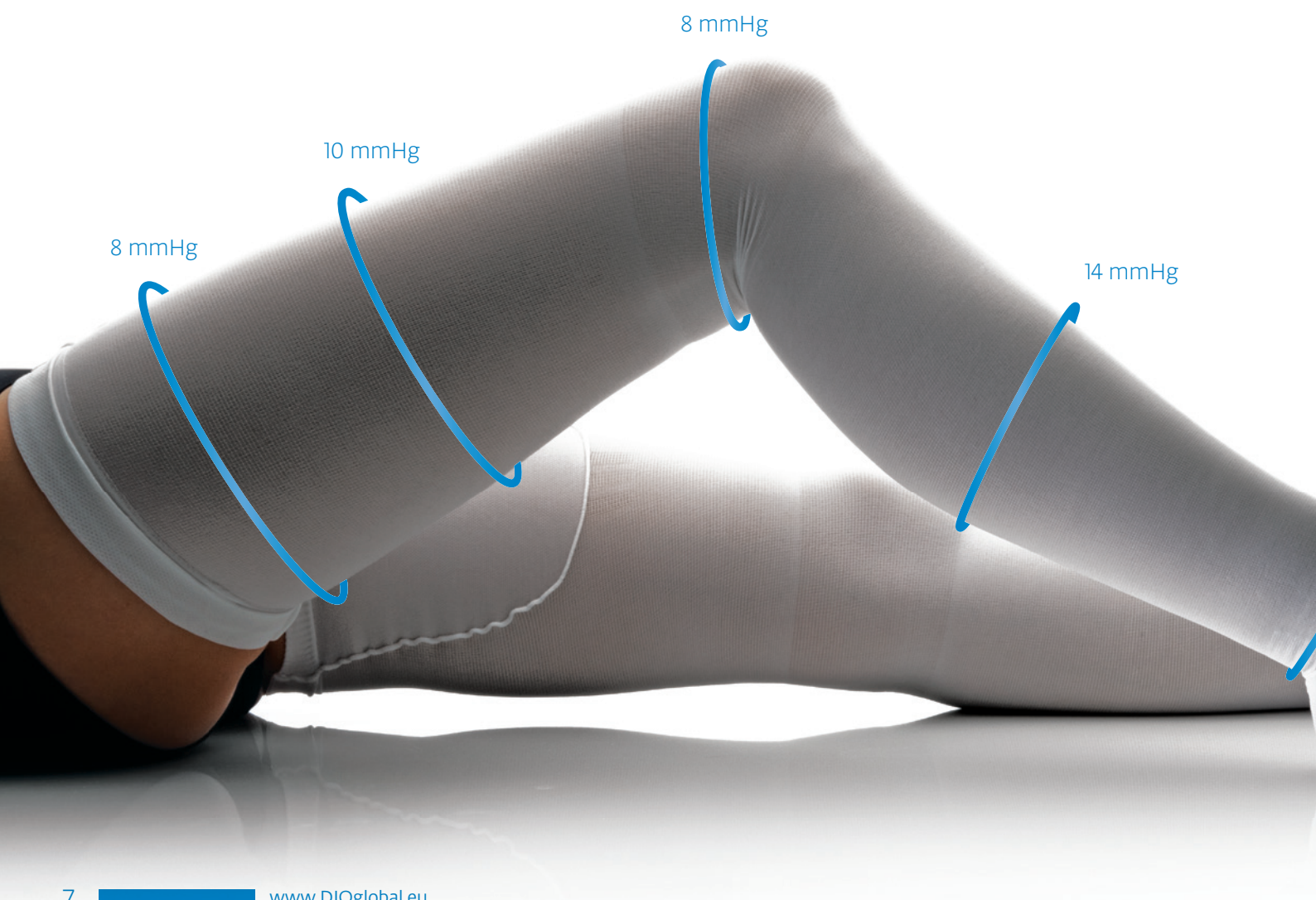
VenaPure anti-embolism stockings have been designed with VTE prevention in mind. DJO Global has been able to use the years of clinical experience gained in the arena of VTE prophylaxis and combine all of these positive attributes into VenaPure.

### Indications

For use in the prophylaxis of deep vein thrombosis and pulmonary embolism in hospitalised patients and for the use in other conditions as directed by the clinician.

### Features and Benefits

- Graduated compression according to Sigel profile (18mmHg at the ankle, decreasing to 8mmHg at the thigh) to minimise venous stasis and venous dilation
- Inspection toe opening on top of the foot to minimise risk of pressure point and ensure that skin integrity is maintained
- Popliteal break is easily identified from stitch change to ensure that pressure is relieved around the popliteal vein
- Pressure relieving panel at the inner thigh to ensure reduced compression against the femoral vein
- Interrupted silicone band at upper thigh provides excellent fixation to the skin, without compromising compression
- Inlay circumferential knit maintains correct positioning of stocking every time
- Colour coded toe and top ensure that the correct size is selected according to patient measurement
- Tape measures included in the dispenser to make patient measurement easier
- Wide range of styles and sizes to ensure that the right product fits the right patient





## Ordering Information



VenaPure - Knee			
Calf Circumference (Toe Colour)	Leg Length (Top Colour)	Part Number	Size
< 30.5 cm	< 41 cm	400R-2	S
	> 41 cm	400L-2	
30.5-38 cm	< 43 cm	400R-3	M
	> 43 cm	400L-3	
38-44.5 cm	< 46 cm	400R-4	L
	> 46 cm	400L-4	
44.5-51 cm	< 46 cm	400R-5	XL
	> 46 cm	400L-5	
51-58.4 cm	< 46 cm	400R-6	XXL
	> 46 cm	400L-6	
58.5-66 cm	< 46 cm	400R-7	XXXL
	> 46 cm	400L-7	



VenaPure - Thigh without Belt				
Thigh Circumference	Calf Circumference (Toe Colour)	Leg Length (Top Colour)	Part Number	Size
< 63.5 cm	< 30.5 cm	< 74 cm	401S-2	S
		74-84 cm	401R-2	
		> 84 cm	401L-2	
	30.5-38 cm	< 74 cm	401S-3	M
		74-84 cm	401R-3	
		> 84 cm	401L-3	
	38-44.5 cm	< 74 cm	401S-4	L
		74-84 cm	401R-4	
		> 84 cm	401L-4	
	44.5-55 cm	< 74 cm	401S-5	XL
		74-84 cm	401R-5	
		> 84 cm	401L-5	
	55-66 cm	< 74 cm	401S-6	XXL
		74-84 cm	401R-6	
		> 84 cm	401L-6	



VenaPure - Thigh with Belt				
Thigh Circumference	Calf Circumference (Toe Colour)	Leg Length (Top Colour)	Part Number	Size
< 63.5 cm	< 30.5 cm	< 74 cm	402S-2	S
		74-84 cm	402R-2	
		> 84 cm	402L-2	
	30.5-38 cm	< 74 cm	402S-3	M
		74-84 cm	402R-3	
		> 84 cm	402L-3	
	38-44.5 cm	< 74 cm	402S-4	L
		74-84 cm	402R-4	
		> 84 cm	402L-4	
	44.5-55 cm	< 74 cm	402S-5	XL
		74-84 cm	402R-5	
		> 84 cm	402L-5	
	55-66 cm	< 74 cm	402S-6	XXL
		74-84 cm	402R-6	
		> 84 cm	402L-6	



## Veinax™

Veinax compression hosiery has been developed specifically to provide the correct medical response to venous diseases of the leg.

By ensuring the right compression levels are maintained at all stages of the condition, we can ensure the medical benefits are met.

### Indications

- For the treatment and management of venous disorders

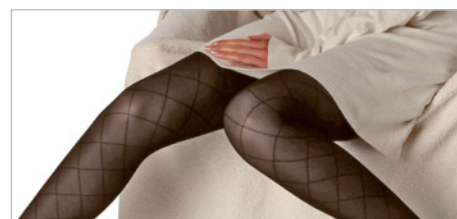
Class 1 – Superficial venous diseases, including functional disorders

Class 2 – Superficial and fascial venous disorders, including varicose veins with oedema, superficial thrombophlebitis and post-sclerotherapy

Class 3 – Deep venous system disorders, severe varicose veins, postphlebitic syndrome and post-operative use

### Features and Benefits

- Optimal compression, according to the French specification (FD CEN/TR 15831)
- Wide range of sizes to fit the majority of the population
- Extra soft material for easy to wear hosiery
- Extra flat seams to ensure comfortable fit
- Wider toe box for all shapes and sizes
- Easy to apply



## Sizing Information

Veinax								
Microtrans, Transparent, Fantaisie						Men Cotton		
Size in cm	Ankle	Calf	Thigh	Thigh -	Thigh +	Ankle	Calf	Thigh
0	16-18	26-29	42-52	-	-	-	-	-
1	18-20	29-32	45-56	38-44	54-60	19-21	32-36	50-60
2	20-23	32-36	48-59	42-48	60-66	21-24	36-40	53-63
3	23-26	36-40	51-62	46-52	66-72	24-27	40-44	56-66
4	26-29	40-44	54-65	50-56	72-78	27-30	44-48	59-69
5	29-33	43-48	62-74	-	-	30-33	48-52	68-75

Length			
Knee		Thigh	
Regular	Long	Regular	Long
<40	>40	<72	>72



### Colour Information

#### Microtrans:

Knee / Holdups / Tights

- Class 1
- Class 2
- Class 3

#### Transparent:

Knee / Holdups / Tights

- Class 2
- Class 3

#### Microtrans:

Open Toe Knee / Holdups

- Class 2

#### Cotton:

Knee / Holdups

- Class 2
- Class 2 (Holdups)

#### Fantaisie:

Knee / Holdups / Tights

- Class 2

#### Anti-Embolism:

Holdups



## DJO GLOBAL, EXPORT CENTRES

### ASIA-PACIFIC:

DJO Asia-Pacific Limited  
Unit 1905, 19/F, Tower II  
Grand Central Plaza  
138 Shatin Rural Committee Road  
Shatin  
HONG KONG  
**T:** +852 3105 2237  
**F:** +852 3105 1444  
**E:** info.asia@DJOglobal.com

### EUROPE, MIDDLE EAST & AFRICA:

DJO Benelux  
Welvaartstraat 8  
2200 Herentals  
BELGIUM  
**T:** +32 (0) 14248350  
**F:** +32 (0) 14248358  
**E:** info.emea@DJOglobal.com

### LATIN AMERICA:

DJO Global, Inc  
1430 Decision Street  
Vista  
CA 92081-8553  
U.S.A.  
**T:** 1 800 336 6569  
**F:** 1 800 936 6569  
**E:** info.latam@DJOglobal.com

## DJO GLOBAL

### AUSTRALIA:

**T:** +1300 66 77 30  
**F:** +1300 66 77 40  
**E:** customerservice.au@DJOglobal.com

### BENELUX:

**T:** Belgium 0800 18 246  
**T:** Netherlands 0800 0229442  
**T:** Luxemburg 8002 27 42  
**E:** benelux.orders@DJOglobal.com

### CANADA:

**T:** +1 866 866 5031  
**F:** +1 866 866 5032  
**E:** canada.orders@DJOglobal.com

### CHINA:

**T:** (8621) 6031 9989  
**F:** (8621) 6031 9709  
**E:** information\_china@DJOglobal.com

### DENMARK, FINLAND, NORWAY & SWEDEN:

**T:** Denmark 89 88 48 57  
**T:** Finland +46 40 39 40 00  
**T:** Norway 23 96 09 27  
**T:** Sweden 040 39 40 00  
**E:** info.nordic@DJOglobal.com

### FRANCE:

**T:** +33 (0)5 59 52 86 90  
**F:** +33 (0)5 59 52 86 91  
**E:** sce.cial@DJOglobal.com

### GERMANY:

**T:** +49 761 4566 01  
**F:** +49 761 456655 01  
**E:** infoservice@DJOglobal.com

### ITALY:

**T:** +39 02 484 63386  
**F:** +39 02 484 09217  
**E:** vendite@DJOglobal.com

### INDIA:

**T:** +91 44 6693 6882  
**E:** customercare.india@DJOglobal.com

### SOUTH AFRICA:

**T:** +27 (0) 87 3102480  
**F:** +27 (0) 86 6098891  
**E:** info.southafrica@DJOglobal.com

### SPAIN:

**T:** +34 934 803 202  
**F:** +34 934 733 667  
**E:** ventas@DJOglobal.com

### SWITZERLAND:

**T:** +41 (0) 21 695 2360  
**F:** +41 (0) 21 695 2361  
**E:** info@compex.ch

### UK & IRELAND:

**T:** +44 (0)1483 459 659  
**F:** +44 (0)1483 459 470  
**E:** ukorders@DJOglobal.com

### UNITED STATES:

**T:** +1 800 336 6569  
**F:** +1 800 936 6569  
**E:** customercare@DJOglobal.com



<sup>+</sup>  
MOTION IS MEDICINE™